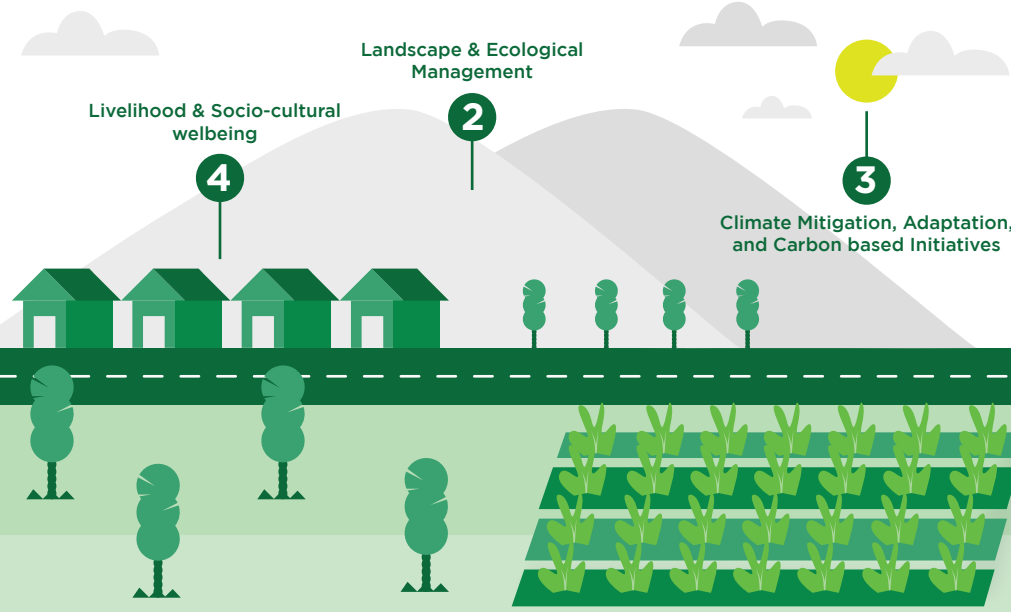


OVERVIEW

For year 2023 - 2025

EAFOR PILLARS



ENVIRONMENT, AGRICULTURE, AND FORESTRY RESILIENCE (EAFOR)

Environment, Agriculture, and Forestry Resilience (EAFOR) is a center under RDI which promotes the resilience of natural ecosystems by advancing scientific research, developing innovative solutions, and engaging with local communities and stakeholders. EAFOR is committed to working towards a sustainable future where natural ecosystems thrive while people and the planet can prosper together. Through our work, we aim to conserve and protect natural resources, maintain biodiversity, and support the livelihoods of local communities



iDE (Cambodia) | DiBiCoo (Lampung) | Blue Halo S (Aceh, Sumut, Sumbar, Bengkulu, Lampung, Banten) | IKN (Kaltim) | NBS (Malang) | SUPA (Southeast Asia) | APIK (Southeast Sulawesi, Maluku) | SurfAid Nusatani (Laboya - NTT & Parado - NTB)

Center Chair: Dr. Saut Sagala (saut.sagala@rdi.or.id)
Center Contact: Ilham Setiawan Noer (ilham.noer@rdi.or.id)

Our Researcher : Dr. Sena Adi Subrata | Prof. Dr. Amzul Rifin | Dr. Ekoningtyas Margu Wardani | Ilham Setiawan Noer | Abdul Baits Dehana Padma Swastika

Current Publication

- Atmowidjojo, A., Pranindita, N., Gracia, E., Kusumayudha, H., Rymizar, M. S., Sagala, S., & Prilandita, N. (2022). Assessment on Policy Implementation for Palm Oil-based Bioenergy Development in Indonesia. ICOSIA UGM 2022.
- McCarthy, J. F., Winarto, Y. T., Sitorus, H., Kutaneegara, P. M., & Budianto, V. Urban Biodiversity and Nature-Based Solutions in Southeast Asia: Perspectives from Indonesia and Malaysia. (2022). COVID-19 and food systems in Indo-Pacific.
- Australian Centre for International Agricultural Research (ACIAR). Prilandita, N., Sagala, S., Azhari, D., & Habib, A. H. (2022). Rural renewable energy development: lessons learned from community-based renewable energy business model in East Sumba, Indonesia. IOP Conference Series: Earth and Environmental Science.
- Rianawati, E., Yuliawati, A. K., Fahroji, F. R., & Sitanggang, R. V. (2022). Youth Entre preneurship & Green Economy Recovery. UNDP, UNICEF, Resilience Development Initiative Report.
- Wen, C., Lovett, J. C., Arsanti, T. R., Suryani, S., Pandarangga, A., & Sagala, S. (2022). Household willingness to pay for improving electricity services in Sumba Island, Indonesia: A choice experiment under a multi-tier framework. Journal of Energy Research & Social Science, 89, 101989.
- Avila, B. E., Sari, I. C., Sagala, S., & Azhari, D. (2021). The role of Essential Ecosystem Area as Nature-based Solution approach for climate change adaptation in Pang pang Bay area, Indonesia. In Eco-DRR Perspectives and Practices from the Global.

CLIENTS



PARTNERS



ROAD MAP

RDI's vision to improve its research in environment, agriculture, and forestry resilience is manifested in our road map below. We currently focus on vanguarding environmental stewardship, dedicating its efforts to promoting the resilience of natural ecosystems and securing a sustainable future where both people and the planet can flourish harmoniously. EAFOR employs a multidimensional approach that encompasses scientific research, innovative solutions, and community engagement.

EAFOR ACTIVITIES

RDI's vision to improve its research in environment, agriculture, and forestry resilience is manifested in our road map below. We currently focus on vanguarding environmental stewardship, dedicating its efforts to promoting the resilience of natural ecosystems and securing a sustainable future where both people and the planet can flourish harmoniously. EAFOR employs a multidimensional approach that encompasses scientific research, innovative solutions, and community engagement.

PROJECTS

RDI has collaborated with various institutions for either projects or events. Some of the key collaboration include:

1. World Food Programme (WFP): Assessing the Plausible Future Climate Impacts on Livelihoods and Food Security and Co-Production of Climate Adaptation Options for CLEAR+
2. Green Climate Fund - Blue Ecosystem Adaptation Mechanism (Blue Halo S)
3. WRI Indonesia - Project Evaluation Sustainable Use of Peatland and Haze Mitigation in ASEAN: Non-state actor participation on sustainable management and use of peatland (SUPA, Component 2)
4. USAID Green Cities Program - IKN Forest City Planning (Individual - RDI Research Fellow)
5. iDE Global - CSmart: Plastic Used in Agriculture

2023

I. Production & Sustainable Value Chain

1. Enhancing sustainable practices of natural resources production
2. Agroforestry for forest resilience transformation

II. Landscape & Ecological Management

1. Maintain forest cover, biodiversity, and recognition of indigenous peoples
2. Monitoring dynamics of land use for agriculture and forestry business
3. Explore the potential of forest resources, ecosystem services, and local community

III. Climate Mitigation, Adaptation and Carbon-based Initiatives

1. Enhancing FOLU Net Sink strategies in climate risk mitigation
2. Advancing forestry contribution in carbon market

IV. Livelihood & Socio-cultural wellbeing

1. Mapping social protection effort for forest-dependent communities
2. Promote forestry innovation to increase communal additional value
3. Encourage agriculture and forest-based entrepreneurship to accelerate just transition towards green jobs

2024

I. Production & Sustainable Value Chain

1. Unlocking green investment potentials for sustainable forest and agriculture production
2. Promoting incentives for sustainable practices in agriculture and forest industries

II. Landscape & Ecological Management

1. Optimizing community-based ecosystem conservation efforts and accelerating critical land restoration
2. Optimizing the development of infrastructure and GIS that supports conservation
3. Development of ecosystem corridors to improve the ecosystem services

III. Climate Mitigation, Adaptation and Carbon-based Initiatives

1. Promote nature based solutions as climate adaptation efforts in forestry and agriculture practice
2. Collaborative governance scheme to support climate budgeting

IV. Livelihood & Socio-cultural wellbeing

1. Formulating and integrating social protection schemes in sustainable practices to increase community resilience
2. Sustainable forest and agriculture strategies to maintain food security
3. Support grassroots action in customary forest management and maintaining land tenure security

2025

I. Production & Sustainable Value Chain

1. Advancing circular bioeconomy for local and international economic growth

II. Landscape & Ecological Management

1. Analyze the impact of development on biodiversity and customary forest governance
2. Creating database related to changes in land cover and the success of infrastructure development
3. Ecosystem services and ecotourism play a role in improving people's wellbeing

III. Climate Mitigation, Adaptation and Carbon-based Initiatives

1. Streamlining relevant stakeholders collaboration in climate action

IV. Livelihood & Socio-cultural wellbeing

1. Promoting and advocating adaptive social protection in forest-dependent communities
2. Impact assessment from forest and agriculture practice to community wellbeing and livelihood