

AREAS OF FOCUS

Policy Advocacy



Youth & Community Empowerment



POLICY ADVOCACY AND COMMUNITY EMPOWERMENT (PACE)

About PACE

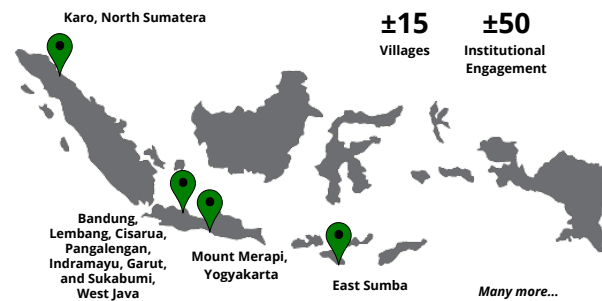
Policy Advocacy and Community Empowerment (PACE) is a center under Resilience Development Initiative which aims to take action to empower community capacity and advocate community issues & needs related to resilience and sustainable development. PACE works alongside with the RDI clusters and mainly focuses on two key approaches:

Advocacy

The center achieves its aim through various advocacy to stakeholder, community development, and public campaign collaborate with Governments, Development Partners, CSOs, NGOs, Private, Academics, and other entities.

Youth & Community Empowerment

COMMUNITY PARTNERS



CLIENTS



Current Members

Aria Mariany (Chair) | Dr. Saut Sagala (Advisor) | Dr. Ayu Krishna (Advisor) | Bony Wiem Lestari, dr, MSc. (Advisor) | Sakti Herliansyah | Michael Hutahaean | Martha Verena Kurnianingtyas | Muhammad Soufi Cahya Gemilang | Danang Azhari | Medhiansyah Putra Prawira | Husnul Aris Alberdi | Nadiya Pranindita

NETWORKS

Partners



Government visits



CONTACT US

- ✉ sakti.herliansyah@rdi.or.id
- ✉ michael.hutahaean@rdi.or.id
- ✉ martha.verena@rdi.or.id
- ✉ mscgemilang@rdi.or.id



www.rdi.or.id/pace

Policy Advocacy and Community Empowerment

📍 Jl. Sidomukti No.99E, Sukaluyu, Kec. Cibeunying Kaler, Kota Bandung, Jawa Barat 40123

Research and Publication

- Prilandita, N., Sagala, S., Azhari, D., & Habib, A. H. (2022, April). Rural renewable energy development: lessons learned from community-based renewable energy business model in East Sumba, Indonesia. In IOP Conference Series: Earth and Environmental Science (Vol. 1015, No. 1, p. 012017). IOP Publishing.
- Anindito, D. B., Sagala, S. A., & Tarigan, A. K. M. (2022). E-musrenbang: a digital framework for local participatory planning at the community level. International Development Planning Review, 44(2), 191-217.
- Sianturi, M. H., & Viartasiwi, N. (2021). Advocating the Temporary Rights to Work for Refugees and Asylum Seekers in Transit in Indonesia. Indonesia Law Review, 11(3), 2.
- Sullivan, G. B., & Sagala, S. (2020). Quality of life and subjective social status after five years of Mount Sinabung eruptions: Disaster management and current sources of inequality in displaced, remaining and relocated communities. International Journal of Disaster Risk Reduction, 49(101629), 1-16.
- Mori, M., McDermott, R., Sagala, S., & Wulandari, Y. (2019). Sinabung volcano: how culture shapes community resilience. Disaster Prevention and Management: An International Journal.
- Suroso, D. A., Sagala, S. A., Alberdi, H. A., & Wulandari, Y. (2018). Does Social Protection on Education increase the Capacity of community in facing Disaster?. Plano Cosmo International Conference on Regional and City Planning, Institute of Technology Bandung, 2018

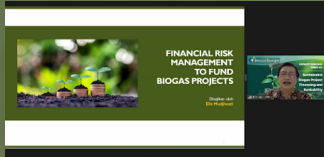
NOTABLE PROJECTS

Policy Advocacy



DiBiCoo Project: Sustainable Biogas Project Financing Capacity Building in Indonesia

In July 2021, RDI conducted a training series on "Financing Biogas Plants" under the DiBiCoo Project. An impressive lineup of speakers were convened from Indonesian Fiscal Policy Agency (BKF), GGGI, TLFF, LPPI, PT. SMI and IRID.



In this capacity building, RDI aimed to educate people on the viable financing schemes available to the public and private sectors, and how finance is crucial to biogas development projects.

GPDRR 2022: Making Displacement Safer (MDS) Project

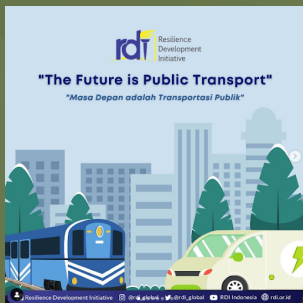
RDI presents the Making Displacement Safer (MDS) Project with Global Network of Civil Society Organisations for Disaster Reduction (GNDR) in Global Platform for Disaster Risk Reduction that is implemented in Garut Regency, West Java, Indonesia.

This session provide an opportunity to expose ideas & initiatives in disaster risk reduction to the global DRR community. The objective is to complement & expand the range of topics & projects discussed at the GP beyond those presented in the main and side events.



The Future is Public Transport - Jakarta Campaign

RDI was tasked to design a campaign with ITF to demonstrate support for public transport as an essential service that underpins climate action and creates jobs and to assist mayors in securing additional support for mass transit and sustainable transport from targeted national and regional governments.



This campaign is aim to:

- Develop a targeted campaign in Jakarta to support city climate action and just transition at the local level -
- Leverage Jakarta's leadership of U20 and Indonesia's G20 Presidency to influence countries on supporting and resourcing public transport as a climate and equity solution
- Develop sustainable funding principles to support cities facing budget challenges on public transport
- Showcase successful sustainable transport climate action at the global level, inspiring others

*Find our more projects on the webpage www.rdi.or.id/pace

Youth & Community Empowerment

NOTABLE PROJECTS

Social Innovation Platform (SIP) West Java Prototype: "Kampung Keluarga Berkualitas"

The Social Business Model Canvas (SBMC) "Objek Daya Tarik Wisata (ODTW) Kampung Keluarga Berkualitas" has been implemented in Kampung KB Madani Kencana Jaya, Cigadog Village, Tamanjaya, Ciemas, Sukabumi Regency, West Java.



RDI activities divided into six activities: system mapping, deep listening, collective sensemaking, co-creation, co-design of quick prototypes, and scaling up. Based on this realization, RDI reckons that the Social Innovation Platform could support the advocacy and bring together various actors to accomplish the SDGs goal amid the pandemic.

GNDR YEU Views from the Frontline: Community Action Plan in Bandung, Indonesia

In 2019, the Resilience Development Initiative conducted a disaster risk survey in four locations in Bandung, both in rural and urban areas, namely Jambudipa Village, Pagerwangi Village, Tamansari Village, and Ciumbuleuit Village.



These four locations were chosen because they have a high disaster risk, with different types of disasters and regional conditions. Jambudipa Village and Pagerwangi Village have a high risk of earthquake disaster, Tamansari Village has a high risk of flooding, and Ciumbuleuit Village has a high risk of landslides.

NOTABLE PROJECTS

Policy Advocacy and Community Empowerment

Urban Living Labs (ULL) Implementation for the Displaced Community in Garut, Indonesia

Resilience Development Initiative (RDI), along with the Global Network of Civil Society Organisations for Disaster Reduction (GNDR), worked on the "Making Displacement Safer (MDS)" project to seek locally-led durable solutions to challenges faced by IDPs living in urban areas.



Partners for Inclusion: Localising Inclusive Humanitarian Response (PIONEER) in Magelang & Sigi District

"Partners for Inclusion: Localising Inclusive Humanitarian Response (PIONEER)" is a mechanism to strengthen the roles of local actors, persons with disabilities, and the elderly through collaborative, effective, and equal partnerships to achieve localized humanitarian response.

*Find our more projects on the webpage www.rdi.or.id/pace